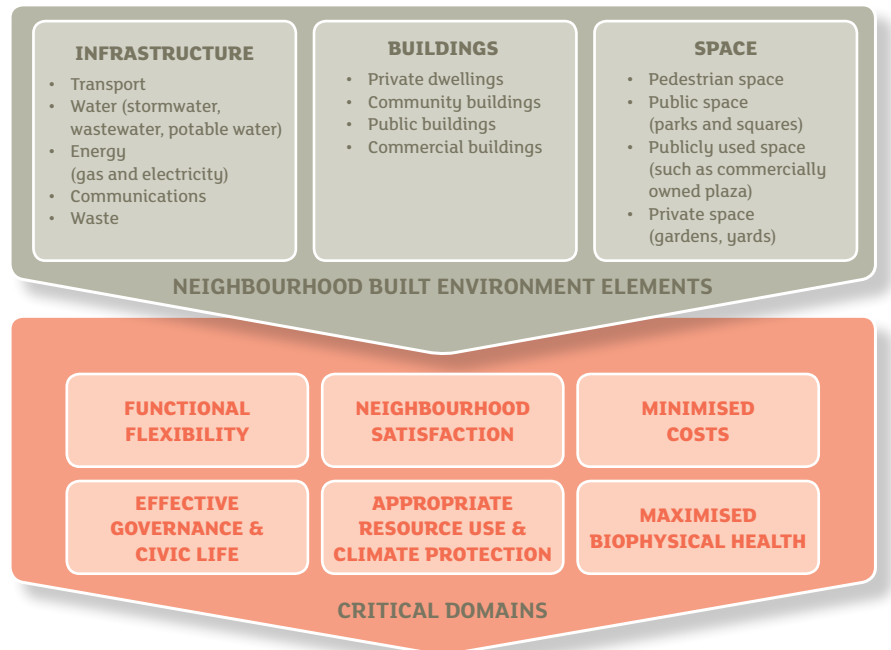


The Neighbourhood Sustainability Framework and Assessment Kit

Part II: The Neighbourhood Sustainability Framework

The Neighbourhood Sustainability Framework (Figure 1) illustrates how the goal of achieving sustainable neighbourhoods is reached through the contribution of key neighbourhood built environment elements, and specific activities associated with these, to six critical domains of neighbourhood sustainability.



GOAL
 The neighbourhood built environment is designed, constructed and managed to generate neighbourhoods that are adaptive and resilient places that allow people to create rich and satisfying lives while respecting the limitations of the natural environment

Figure 1: The Neighbourhood Sustainability Framework.

To maximise neighbourhood level sustainability, all of the six domains need to work together (Figure 2).

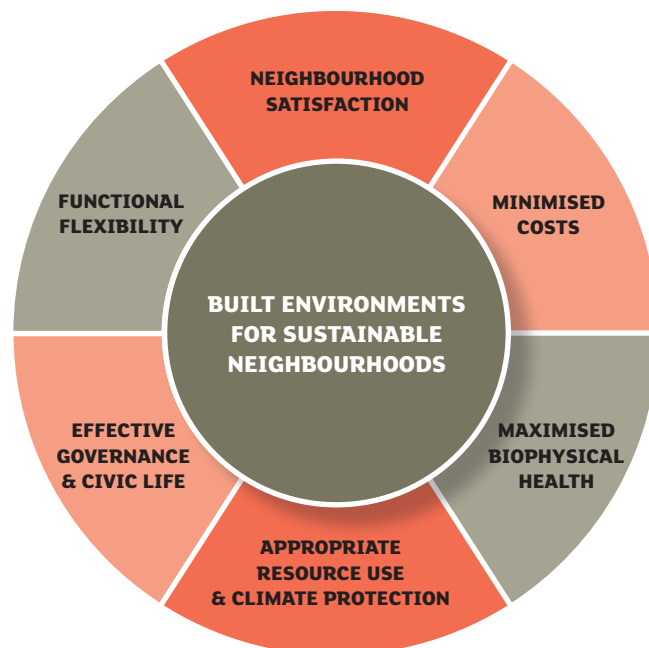


Figure 2: Six key areas for neighbourhood success.

Key outcomes in each of these domains are:

1. **Functional flexibility**

The built environment can be continuously adapted to changing conditions, such as:

- changes in household structure
- changes in transport costs and choices
- changing ethnic and socio-economic mix of the population
- the effects of climate change

2. **Neighbourhood satisfaction**

People like to live in the neighbourhood because it offers:

- housing quality and durability with low levels of dilapidation
- street safety
- low noise disturbance
- opportunities for casual social interaction

3. **Minimised costs**

The neighbourhood minimises the costs associated with:

- travel
- dwelling and section provision, maintenance and repair
- infrastructure provision, maintenance and repair
- facility provision, maintenance and repair

4. **Effective governance and civic life**

The neighbourhood encourages:

- meeting people on the street and getting to know neighbours
- access to neighbourhood and city wide facilities and amenities
- ease of access to services and amenities for diverse levels of mobility
- opportunities to get involved in neighbourhood governance

5. **Appropriate resource use and climate protection**

The neighbourhood uses resources wisely by:

- maximising dwelling performance and reducing energy and water use
- considering land consumption
- reducing transport energy use
- using sustainable/renewable sources of energy, water and materials

6. **Maximised bio-physical health**

The neighbourhood protects the environment by:

- reducing negative impacts on air quality
- ensuring aquatic health
- protecting/enhancing biodiversity and soil quality

The tools included in this Kit are designed to measure the elements that contribute to each of these domains, and to indicate the sustainability band the neighbourhood has achieved and its areas of strength and of weakness.

All information and tools associated with this Kit are free to use and to share. They are available from http://www.beaconpathway.co.nz/neighbourhoods/article/the_neighbourhood_sustainability_framework